

Adtron SolidState Data Drive SDDB Installation Manual

1 Introduction

Congratulations on your purchase of the Adtron SDDB! The SDDB connects to the computer's IDE port and allows reading and writing of SRAM, linear flash, CompactFlash and ATA PC Cards. This manual describes how to install the SDDB.

Before beginning the installation, we recommend turning the computer's power OFF.

2 Equipment List

Equipment list for the SDDB:

- SDDB SolidState Data Drive
- Interface ribbon cable
- Software diskette
- Installation Manual

3 Install the SDDB

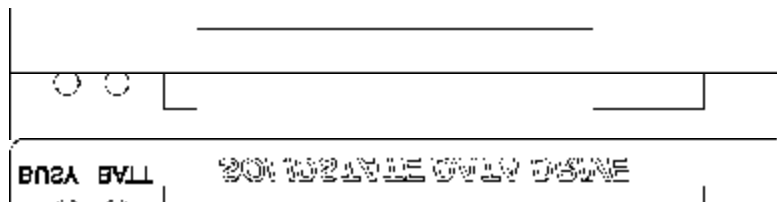
Locate an empty 3.5" floppy disk drive bay and slide the SDDB into it. Secure it using the included screws. If you only have 5.25" drive bays available, a drive-bay adapter can be purchased from Adtron Sales. You may have to remove the computer case to install the SDDB. Consult your computer documentation for more information.

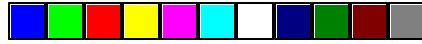
4 Connect the Cables

Connect the ribbon cable to the SDDB, noting that the stripe of the ribbon cable should be near the power connector. Connect the other end of the ribbon cable to the secondary IDE port of the computer. Then connect a disk drive power cable to the power connector of the SDDB.

Note: the SDDB must be the only device on the IDE controller. It can not co-reside with another IDE device on the ribbon cable.

Re-assemble the computer and turn it on.





5 Windows 9x/ME/NT Software Installation

For DOS/Windows 3.x, see **Section 8**.

The file **README.TXT** on the diskette contains the latest installation and usage information about the SDDB. To read this file, click on **Start, Run...**, and type in **A:\README.TXT**.

- 5.1** To begin the software installation, click on **Start, Settings, Control Panel**.
- For Win9x/ME, run **Add New Hardware**
 - For WinNT, run **SCSI Adapters** (must be performed as Administrator)

Windows 9x/ME



Once the Add New Hardware Wizard starts, Click **Next** to continue.

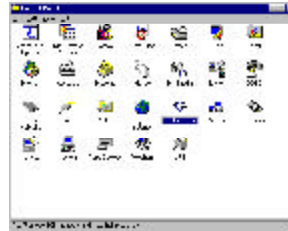


The Add New Hardware Wizard may search for Plug and Play devices. The SDDB is not Plug and Play. Click **Next** to continue.



We don't want Windows to search for the SDDB, so click on **"No, I want to select the hardware from a list"**. Click **Next** to continue.

Windows NT



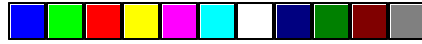
To install the SDDB, run **SCSI adapters**.



When the list of SCSI devices appears, click on the **Drivers** tab.



In the **Drivers** tab, click on **Add**.



5.2 Windows 9x/ME/NT Software Installation (continued)

Windows 9x/ME



In the list of hardware types, scroll down to **SCSI controllers** and select it. Click **Next** to continue.



Insert the floppy disk into the floppy disk drive. In the list of SCSI controller manufacturers and models, click on **Have Disk**.



When the **Install From Disk** window appears, type in **"A:\Win9x"** and then click on **OK**. This also applies for WindowsME.



The Adtron SDDB NT SCSI Miniport Driver should show up in the list. Click **Next** to continue.

Windows NT



Insert the floppy disk into the floppy disk drive. In the list of SCSI controller manufacturers and models, click on **Have Disk**.



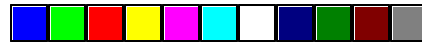
When the **Install From Disk** window appears, type in **"A:\WinNT"** and then click on **OK**.



The Adtron SDDB NT SCSI Miniport Driver should show up in the list. Click **OK** to continue.



Verify that the path to the driver is correct and then click on **Continue**.



5.3 Windows 9x/ME/NT Software Installation (continued)

Windows 9x/ME



The system won't show any resources used. Click **Next** to continue.



Click **Finish** to continue.



When prompted to restart Windows, click **NO**.

To complete the installation, we must modify the device settings.



Click on **Start, Settings, Control Panel**. Run **System**.

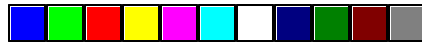
Windows NT



This window allows you to set certain operating parameters. The defaults are fine for most systems. If you plan to use SRAM cards, type in "**SRAMCHK**" in the **Other Options** field. Click **OK** to continue.



To complete the installation, you must restart Windows. Remove the diskette and click **Yes** to continue.



5.4 Windows 9x/ME/NT Software Installation (continued)

Windows 9x/ME



Click on the **Device Manager** tab. Scroll down and double-click on **SCSI Controllers**. Then double-click on the **Adtron SDDB NT SCSI Miniport Driver**.



The properties will come up. In the **Adapter settings** field, type the following:

```
PORT=170/DF,NO,500,NO NOLOAD SRAMCHK
```

Click on **OK** to continue.



The system must be restarted for the changes to take affect. Click on **Yes** to reboot.

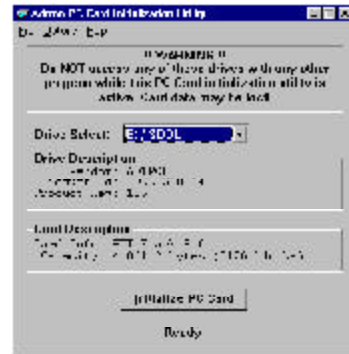
Once Windows restarts, there should be a new drive letter, such as **Removable Disk (D:)** in My Computer or Explorer. If there is no new drive letter or you cannot access the memory card, proceed to **Section 8 - Troubleshooting**.

6 CARDINIT.EXE Utility

A utility called CARDINIT.EXE is supplied on the diskette but isn't installed by default. CARDINIT will allow you to reinitialize the memory card. It is only used when a memory card has lost its format or has become corrupted.

It is not necessary to run CARDINIT.EXE unless the memory card is completely unreadable. If you need to format the card, use My Computer or Explorer.

To run CARDINIT.EXE, copy it to your computer, or simply run it from the diskette.



After CARDINIT.EXE starts, check the capacity reported in the Card Description area near the bottom. It should match the card's actual capacity. If it matches, click the **Initialize PC Card** button to format the memory card. If it doesn't match, do not initialize the card - try formatting it in a different system, such as a laptop.

For SRAM users under Windows NT, enable **Options | Place Partition Table on SRAM Cards**.

7 DOS / Windows 3.x Software Installation

To install the SDDB DOS device driver, copy the DOS device driver to your hard disk drive. Then edit CONFIG.SYS and add the line below:

```
device=c:\<path>\sddbpc.sys /m1 /pXXX
```

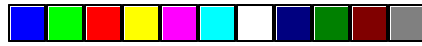
Where:

```
<path> directory of the DOS device driver  
/pXXX XXX = I/O address (170 for the secondary IDE port)
```

Finally, save CONFIG.SYS and reboot. During the boot process, the device driver will load and display the following information:

```
SolidState Data Drive Serial Integrated Interface SDD-B-ISA V1.12a  
Copyright (C) 1991-1994 Adtron Corporation  
- SolidState Data Drive Installed as Drive D:  
- Address of Drive Port I/O: 0170  
- Segment of Driver: 029E
```

There should now be a new drive letter for the SDDB, such as **D:** or **E:**. If there is no new drive letter or you cannot access the memory card, proceed to **Section 8 - Troubleshooting**.



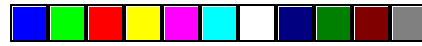
8 Troubleshooting

The SDDB is simple to install and operate. However, you may experience some problems with an installation. Listed below are some common problems and possible solutions.

Problem	Possible Solutions
Device Manager reports that the device is not working properly.	Check the settings in Device Manager. Is the SDDB connected to the correct port?
	Check the power supply cable. Is it plugged in?
	Check the ribbon cable connection. Is it secure?
	Check the adapter settings in the Settings tab.
In Explorer, when I try to access the card, it just shows a 3.97MB card with nothing on it. I can't copy anything to it.	You may need to remove the unit, reboot, and re-install.
	The SDDB does not recognize the format of the card. Use CARDINIT.EXE to re-initialize the card. If using SRAM under Windows NT, you may need to place a partition on it.
	Try removing and then reinstalling the device driver. Reboot afterwards.
	Is the PC Card fully inserted? The end of the ejector button should be flush with the end of the PC Card.
The SDDB is installed as drive D:. Drive D: used to be the CD-ROM. Now my CD-ROM programs won't run.	Is the card linear Flash? If so, it may be formatted with a Flash File System, which is not compatible.
The SDDB is installed as drive D:. Drive D: used to be the CD-ROM. Now my CD-ROM programs won't run.	Windows assigns drive letters in a certain order. The SDDB may be assigned a drive letter before the CD-ROM. This may cause the CD-ROM to be "pushed" out to Drive E: or it may disappear altogether. You can change the drive letter of the SDDB in Device manager, under Disk Drives. For a detailed explanation of the steps involved, read the README.TXT file on the diskette.

For more information and assistance, visit the Adtron website:

<http://www.adtron.com>



Adtron SDDB Installation Manual

9 Specifications

Card Types	PC Card ATA Flash, SRAM, linear Flash, CompactFlash with Adapter
Indicators	BATT LED: Indicates when SRAM battery is low or dead BUSY LED: Indicates accesses to the memory card
Interface	IDE, 40-pin, 0.1" pitch
PowerSupply	Standard disk drive power cable: 5VDC @ 80mA (w/o card); 12VDC is not required

10 Warranty

Adtron warrants this product to be free from defects in materials and workmanship for one (1) year. If this product fails within that time due to such a defect, Adtron will repair or replace this product at no charge.

This warranty does not apply if this product has been damaged by abuse, accident, disaster, misuse or incorrect installation.

Contact the dealer or distributor to obtain warranty service instructions. Some dealers may have specific return policies not covered by these instructions. **Do not return this product directly to Adtron.**

FC FCC Compliance Statement

This equipment has been tested and found to comply with limits for a Class B digital device, pursuant to Part 15 of the FCC Rules. These limits are designed to provide reasonable protection against harmful interference in a residential installation. This equipment generates, uses and can radiate radio frequency energy and, if not installed and used in accordance with the instructions, may cause harmful interference to radio communications. However, there is no guarantee that interference will not occur in a particular installation. If this equipment does cause harmful interference to radio or television reception, which can be determined by turning the equipment off and on, the user is encouraged to try to correct the interference by one or more of the following measures:

- Reorient or relocate the receiving antenna.
- Increase the separation between the equipment and receiver.
- Connect the equipment into an outlet on a circuit different from that to which the receiver is connected.
- Consult the dealer or an experienced radio/TV technician for help.



ESD Caution

Static electricity may be discharged through the PC Card into the SDDB. In extreme cases this may temporarily interrupt the operation. To prevent this, touch a grounded device, such as a computer case, prior to inserting the PC Card.

There are no user-serviceable components within the unit.

NOTICE

This manual describes the features of Adtron's SolidState Data Drive. Adtron reserves the right to modify, amend, or in any way change the contents and/or products described herein, at any time, without notification.

The information contained in this document is provided for reference only. Adtron Corporation does not assume any liability arising out of the application or use of the products described herein. This document may contain or reference information or products protected by copyrights or patents and does not convey any license under the patent rights of Adtron Corporation, nor the rights of others.

Adtron Corporation
4415 E. Cotton Center Blvd. Suite #100
Phoenix, AZ 85040
<http://www.adtron.com>

Trademarks

All other trademarks are held by their respective owners
Copyright © 1997 - 2002 Adtron Corporation.
All rights reserved.

Revision: A, PN: 610200020, EN: F15032 A



